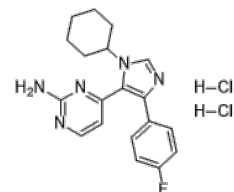


Product Name : PF670462 dihydrochloride
Cat. No. : PC-23901
CAS No. : 950912-80-8
Molecular Formula : C₁₉H₂₂Cl₂FN₅
Molecular Weight : 410.32
Target : Casein Kinase
Solubility : 10 mM in DMSO



Biological Activity

PF-670462 dihydrochloride (PF670462) is a potent and selective inhibitor casein kinase CK1ε and CK1δ with IC₅₀ of 7.7 nM and 14 nM, respectively.

PF-670462 causes a significant phase delay in animal models of circadian rhythm.

References

Badura L, et al. J Pharmacol Exp Ther. 2007 Aug;322(2):730-8.

Bryant CD, et al. Psychopharmacology (Berl). 2009 May;203(4):703-11.

Walton KM, et al. J Pharmacol Exp Ther. 2009 Aug;330(2):430-9.

Caution: Product has not been fully validated for medical applications. Lab Use Only!

E-mail: tech@probechem.com